

Project Portfolio



22 America House

Background

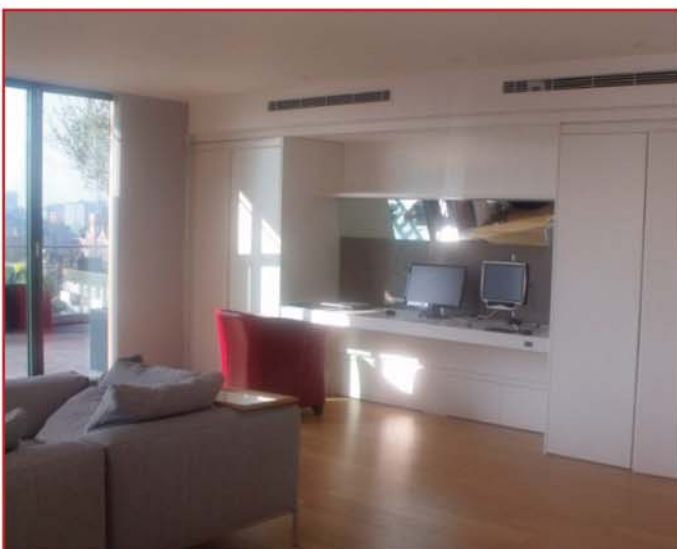
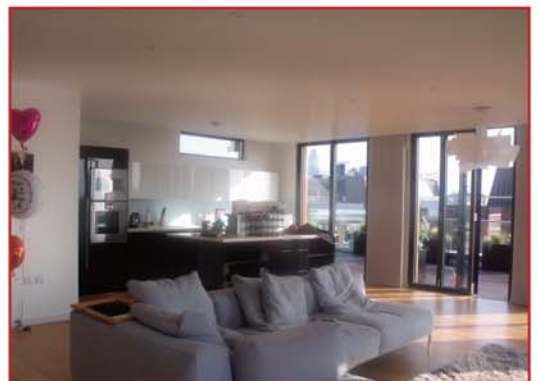
22 America House is an existing penthouse in a six storey residential development located on a small pedestrian road called Keppal Row in South East London.

Scope of Works

The works comprised of remodelling the internal layout to suit the requirements of a disabled resident in accordance with recommendations made by the Occupational Therapist. A new specialist hoist was installed together with the fitting of new carpets, window blinds and decorations.

Building Associates provided bespoke built in joinery, including a wardrobe, specialist bed, cupboards and storage units. The light fittings and switches both internally and externally were reconfigured to suit the client's needs. A wheelchair friendly bathroom was fitted out incorporating underfloor heating, disabled shower with seating facilities and waterproof wall cladding.

"The works were finished to an extremely high standard and the resident was immensely pleased with the end result"



Client: WT Partnership
LB Westminster

Value £ 110,000.00

Contract Period: 4 weeks

**BUILDING
ASSOCIATES
LIMITED**